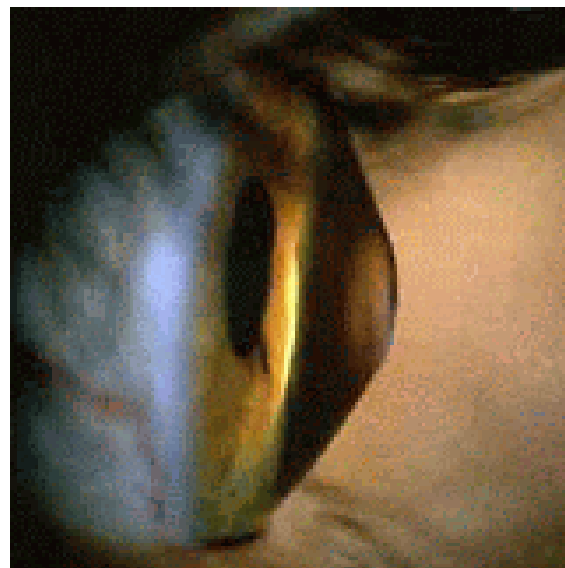


Implantation of Artisan toric phakic intraocular lenses for the correction of astigmatism and spherical errors in patients with keratoconus

Dr Kamal Okasha MD,PhD
Ophthalmic consultant
Director of St.John Eye Center
Founder of International Eye Center

Keratoconus

- Progressive,
- Bilateral (usually asymmetrical)
- Incidence of 1 in 2000 of general population.
- 870 in Gaza ???????



Keratoconus

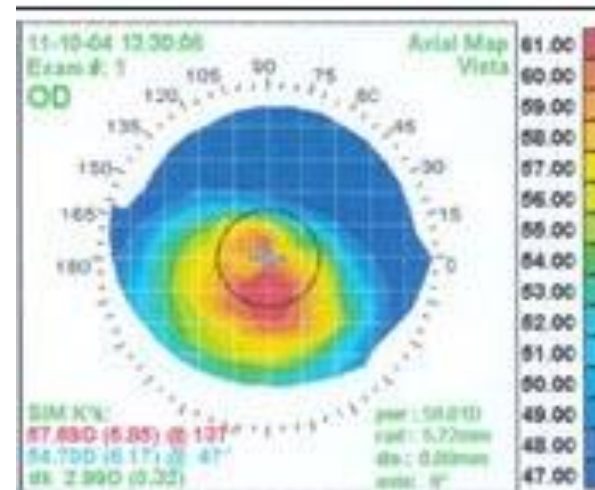
- The patient becomes myopic
- The error of refraction cannot be satisfactorily corrected with ordinary glasses due to irregular astigmatism.

Keratoconus investigations

- UCVA
- BCVA
- Biomicroscopy
- Corneal topography
- Pachymetry
- Specular microscopy



RIGHT EYE

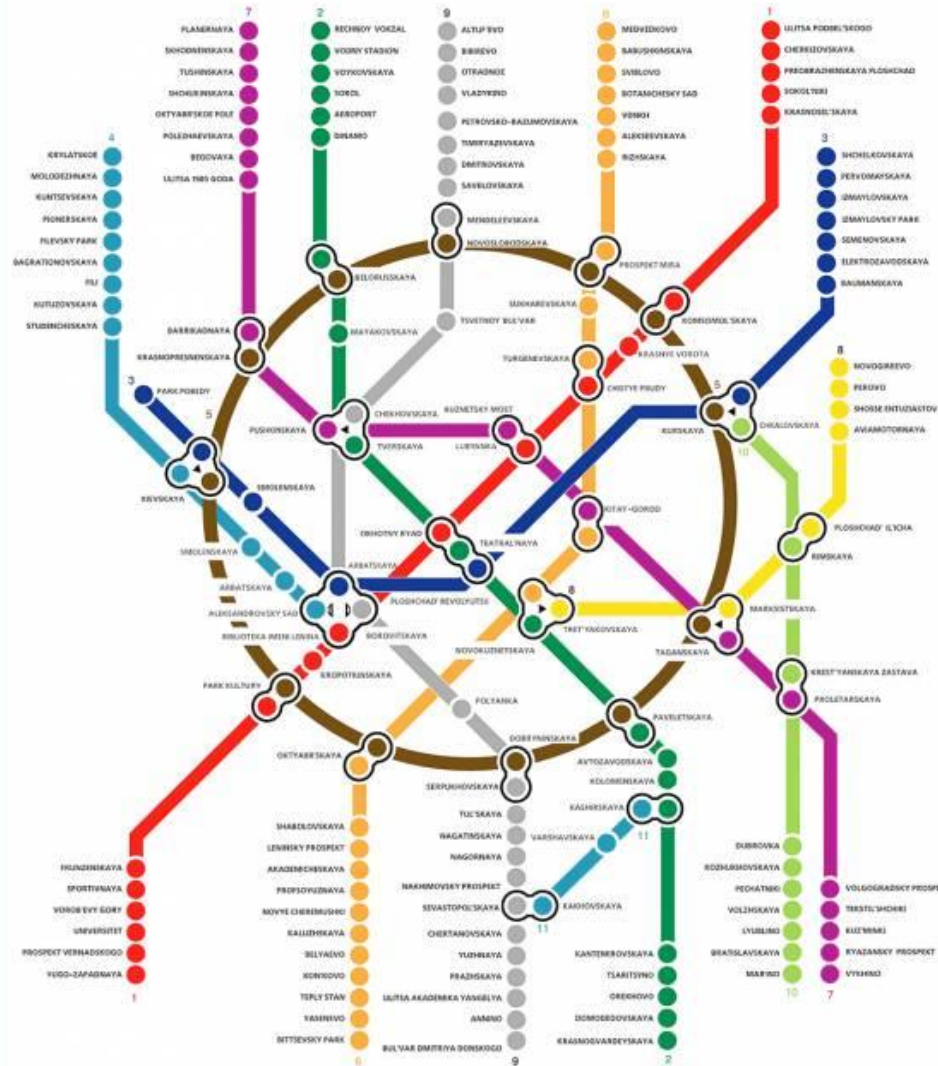




**My Road map in keratoconus
management**

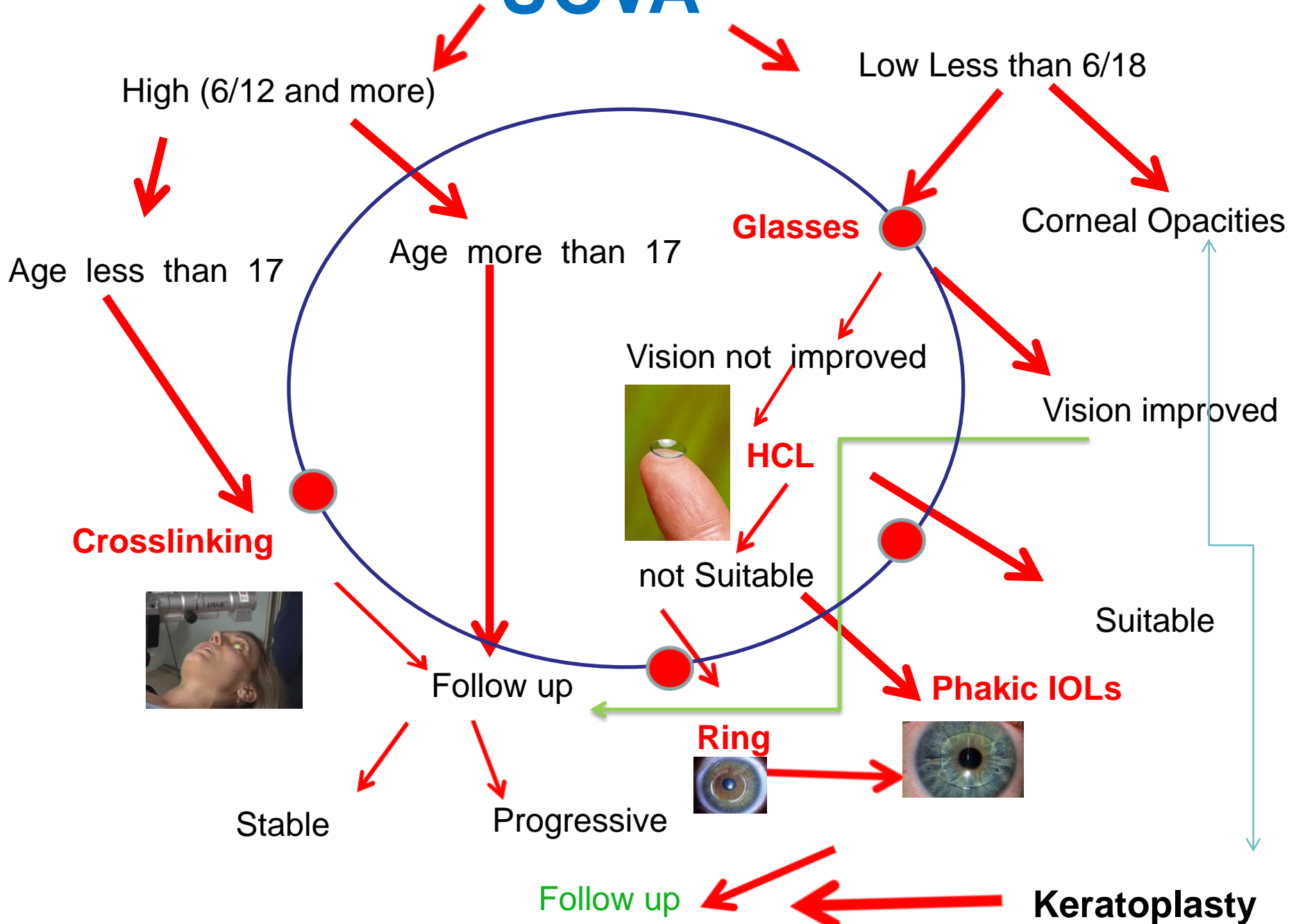


MOSCOW METRO MAP



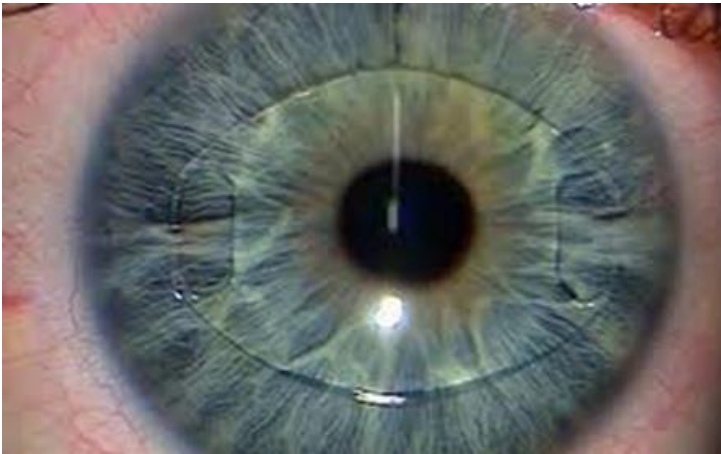
1	1	5	7	9	11
2	4	6	8	10	Transfer Station

UCVA



PURPOSE:

- To determine the efficacy of Artisan toric iris-fixated lens implantation to correct high ametropia and astigmatism in keratoconus





DESIGN

Retrospective , noncomparative case series.

Data collection was done by Eman Khaled OD

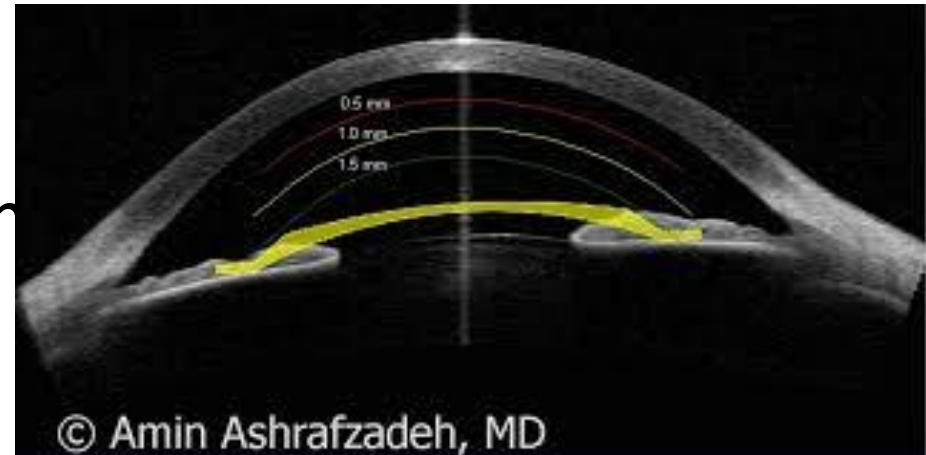


PARTICIPANTS:

- Artisan toric lens implantation was performed in 21 eyes of 16 patients who were contact lens intolerant and were unable to wear glasses because of anisometropia, high astigmatism, or both.
- 2 cases after ring implantation
- 10 cases after crosslinking

Inclusion criteria

- Clear cornea.
- Stable keratoconus
- ACD is more than 3 mm
- Low UCVA
- High BCVA



IOL calculation



Ahmed abu Mustafa OD

Dioptic power calculated*

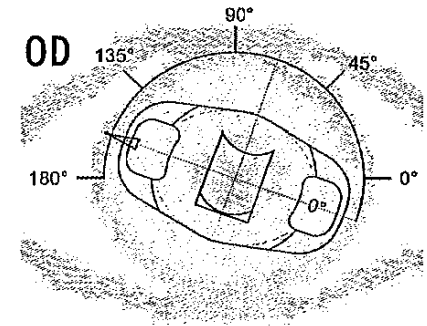
Right
 Sphere : -5,61
 Cylinder : -2,08
 Axis : 70°

ARTISAN® Toric PIOL recommended (Ø5mm)

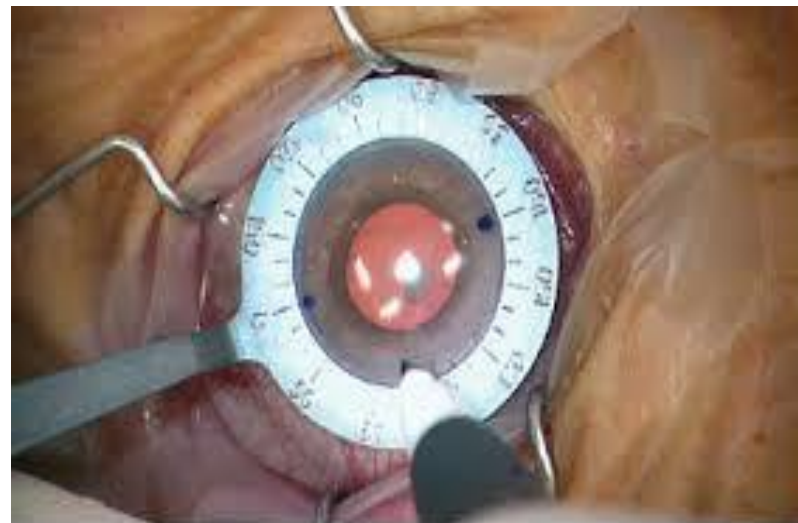
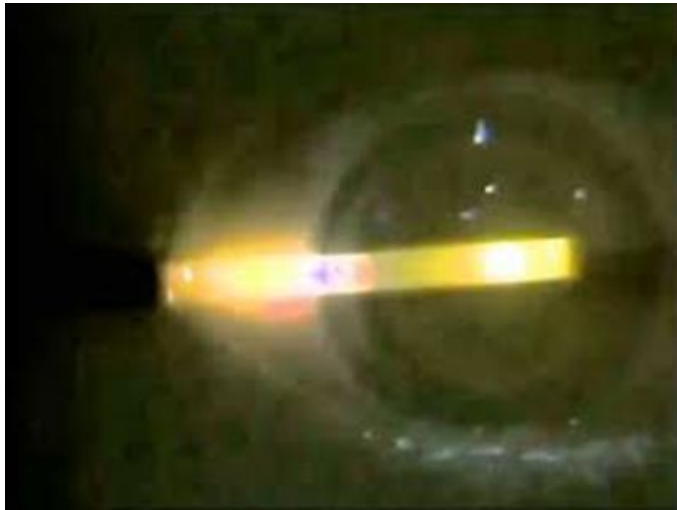
Sphere : -5,5
 Cylinder : -2,0
 Axis : 90°
 Articlecode : 140041W11N
 PTIOL to be implanted in 160°

Left
 Sphere : -
 Cylinder : -
 Axis : -

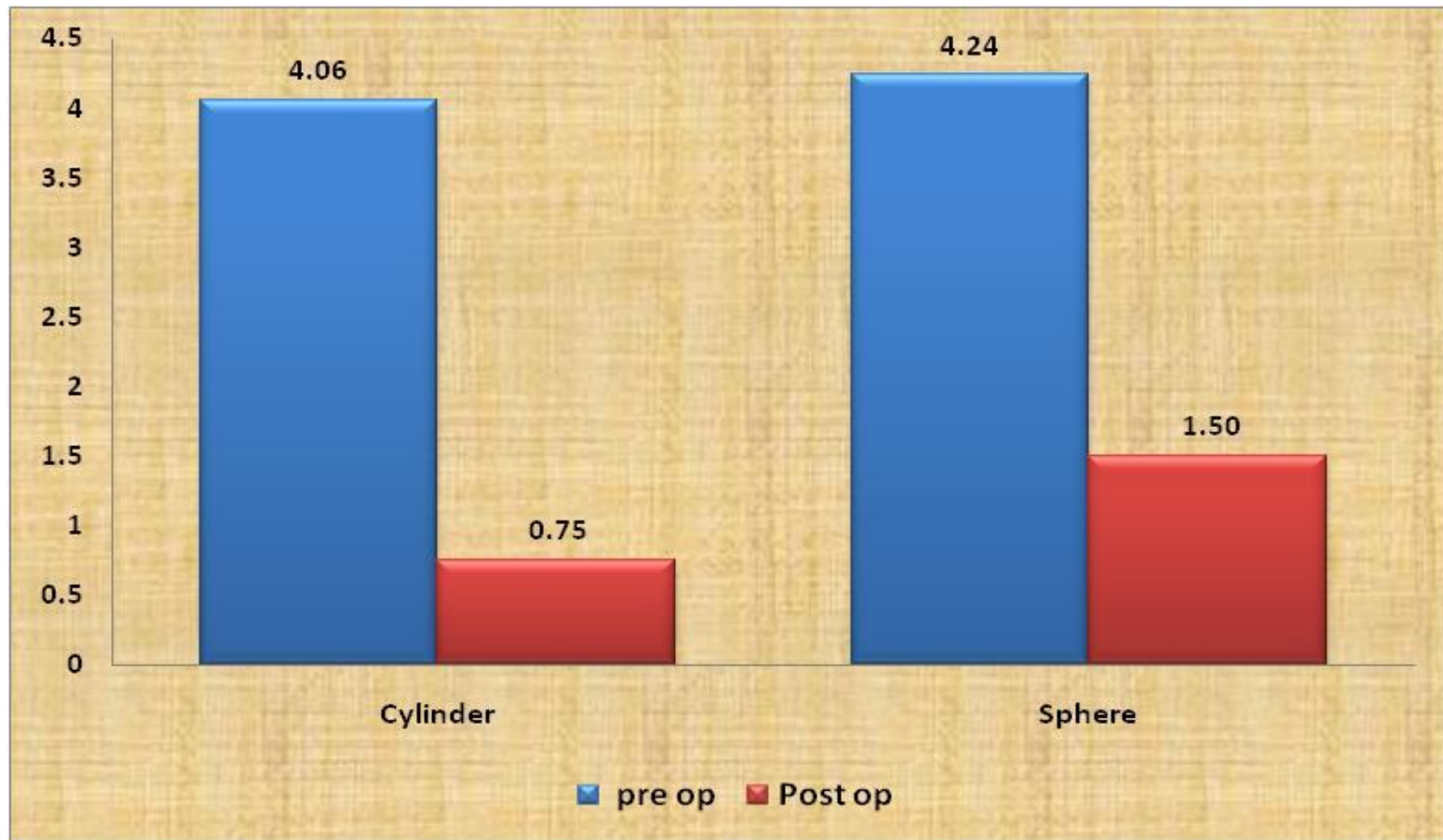
Sphere : -
 Cylinder : -
 Axis : -
 Articlecode :



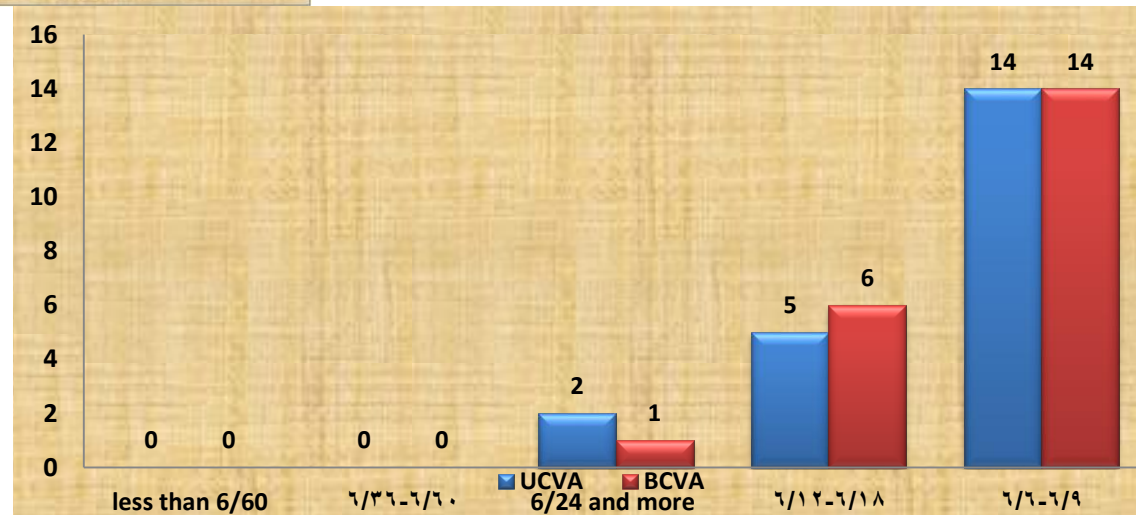
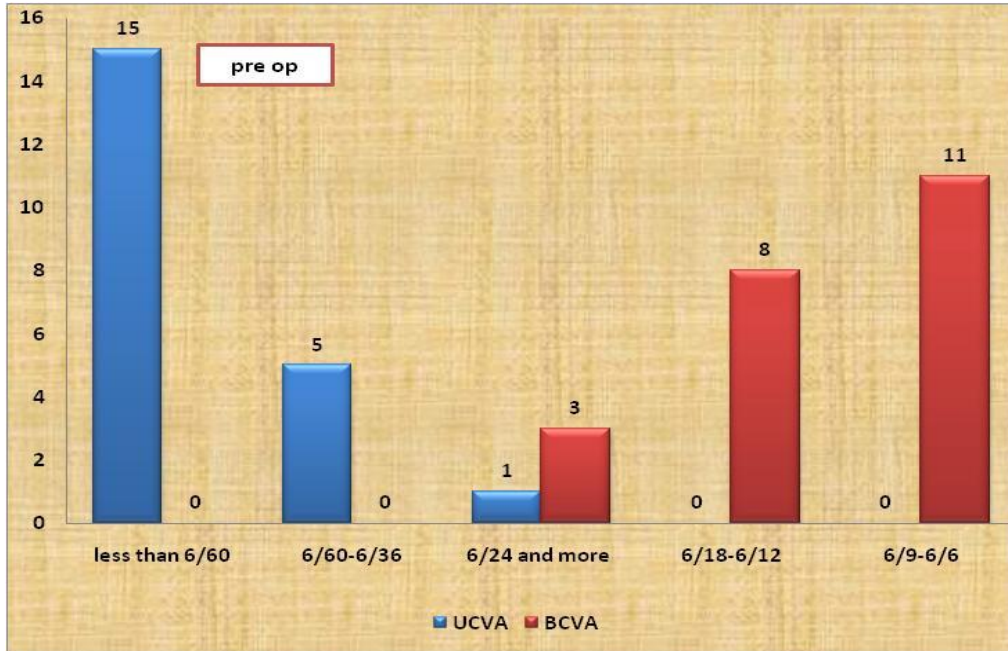
Preop axis marking



Astigmatism and myopia correction



Vision improvement



Conclusion

- Artisan toric lens was effective for reduction of refractive astigmatism and ametropia .
- A longer follow-up and a larger number of patients are needed to assess the safety and the effect of the lens.
- One of options of keratoconus treatment

Surgical Technigue

